



Transmag (UK) Limited

Type TMMU 1 Dry Type Metering Unit



Specification

The TMMU 1 comprises of two cast resin wound primary current transformers, connected in red & blue phases and one 3 phase. 3 limb cast resin voltage transformers, all totally enclosed in a weatherproof ventilated steel housing, (IP54 rated) with mounting flangers 50 ESI 4KHZ, & adjustable height pedestal.

The Voltage transformer ratio changeover links are provided as required together with outgoing V.T / C.T Secondary wiring terminals.

The TMMU1 bolts directly to the tee-off flange of a ring main unit, and either a cable box or a power transformer can be fitted to the outgoing flange of the TMMU1 or it can be fitted with 2 cable boxes to form a free standing unit.

Main Features

- Oil free
- Outdoor
- Double & Triple Ratio, Cast resin CT's available
- Dual Ratio & 5 Limb V.T. arrangements available
- Current & Voltage ratios up to 400A and 12KV
- Easy access to secondary fuses & connections
- Option of HV fuses for voltage transformer.

Transmag (UK) Limited

Email: enquires@transmaguk.co.uk

Units 2 & 3 St Andrews

Bayly Works

Great Barr Street

Birmingham, West Midlands B9 4BB

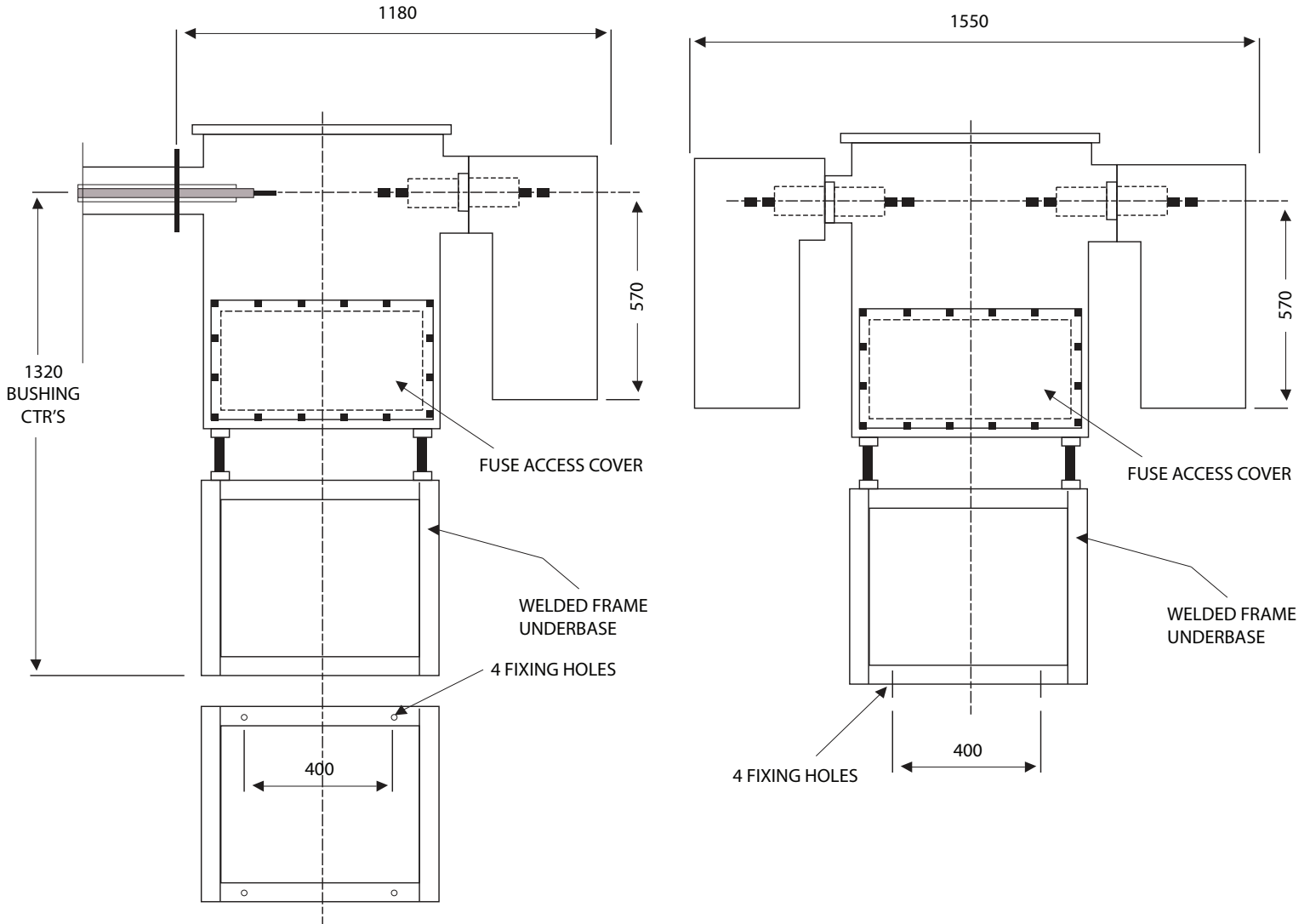
Tel: +44 (0) 121 753 4390 Fax: +44 (0) 121 773 9369

For further information please visit our web site at: <http://www.transmaguk.co.uk>



TYPE TMMU 1

The TMMU1 fully complies with EATs 41.26



Technical Data

Voltage	Up to 12KV
Frequency	50/60Hz
Impulse Level	95KVp
Short Time Current	16KA for 3 sec
Power Frequency	28 KV

Transmag (UK) Limited

Email: enquires@transmaguk.co.uk

Units 2 & 3 St Andrews

Bayly Works

Great Barr Street

Birmingham, West Midlands B9 4BB

Tel: +44 (0) 121 753 4390 Fax: +44 (0) 121 773 9369

For further information please visit our web site at: <http://www.transmaguk.co.uk>

